

# Rollmaxx

**SureWeld**  
*After all, Quality does Carry Weight!*

## Aluminium Plant Trailers



SW2000C

SW2400EC

SW2000

SW2000W

SW2400E

SW2400EW

SW3500E

SW4100E

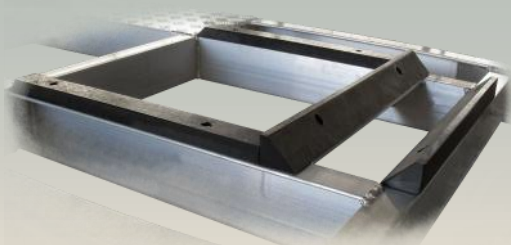


**1800 787 005**

**[www.sureweld.com.au](http://www.sureweld.com.au)**

# Rollmaxx

## Features

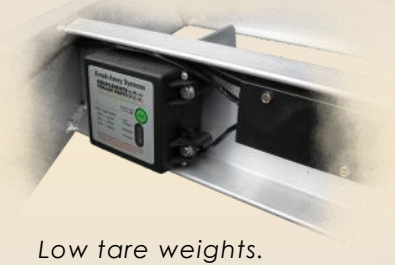


Unique, shockproof HDPE blade and bucket rests.



Zinc-plated, then powder-coated mudguards in a choice of colours.

Electronic breakaway system on all electric braked models.



Low tare weights.

Adjustable Blade Stop enables accurate load positioning and balance every time.



All new wheels and tyres.

Mechanical override or Electric brakes.



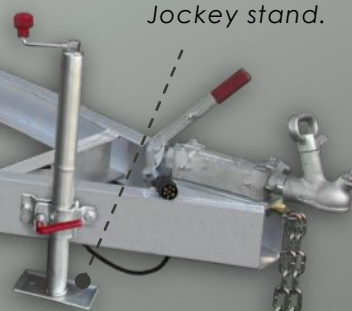
Parabolic Suspension. ('C' Models only)



Independent Rubber (torsion-bar) Suspension. (Exc. 'C' Models)



Jockey stand.



Multiple tie-down points.



1800 787 005



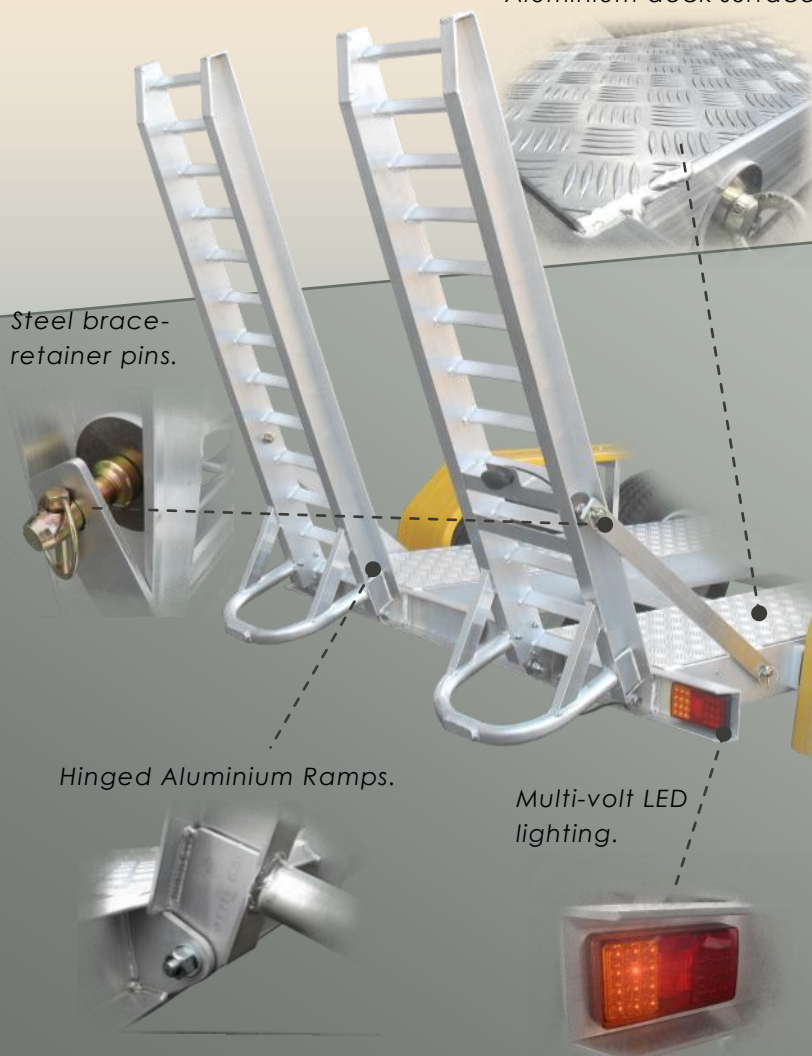


**Excavator Series**



**Loader Series**

*Aluminium deck surface.*



*Steel brace-retainer pins.*

*Hinged Aluminium Ramps.*

*Multi-volt LED lighting.*

**Sureweld Trailers demonstrate exceptional levels of refinement in structure and presentation.**

**C**hassis, suspension and drawbar designs are passed through stringent FEA modelling and testing in addition to physical field trials.

Fine details such as working parts, wear areas and surface finishes are completed to the highest standard.

All this is coupled with the fundamental objective of achieving optimum weight saving for economical operation.

Short lead times allow operators to set up their outfit promptly and be on the road and working in the shortest possible time.

Sureweld Plant Trailers are available through a national network of dealers and fully comply with Australian Design Regulations.

**Please see overleaf for more information and specifications.**



## 'OPTIONAL ACCESSORIES'

PRODUCT NAME	PRODUCT CODE	PRODUCT DESCRIPTION
Brake Controller, Electric - Manual. (Legal in QLD only)	EBM2435	Trailer-mounted, manually-adjusted Electric Brake Controller. (No wiring necessary on Tow Vehicle).
Load Restraint Kit - Detachable.	LRD2435	Web, Ratchet & 8mm Chain Kit - Detachable
Load Restraint Kit - Fixed.	LRF2435	Web, Ratchet & 8mm Chain Kit. Permanent fixing to Trailer using 'Hammerlock' Chain Links.
Ramps - Custom Size.	-	Trailer Loading Ramps can be supplied with custom lengths or widths upon request.
Tow Coupling 70mm (non-standard).	TC70	Coupling to suit 70mm Ball size . (Standard size is 50mm).
Tow Ball 70mm (non-standard).	TB70	70mm Ball to suit 70mm Coupling.
Upgrade to 14" Alloy Wheels.	WTU14	Upgrade from steel wheels to 14" Alloy wheels. Additional charge per Trailer.
Upgrade to 16" Alloy Wheels.	WTU16	Upgrade from steel wheels to 16" Alloy wheels. Additional charge per Trailer.
Wheel & Tyre, Spare, 14" Alloy (supply only)	WTA14	Alloy wheel, 5-stud, "Ford" pattern.
Wheel & Tyre, Spare, 14" Steel (supply only)	WTS14	White "Sunraysia" wheel, 5-stud, "Ford" pattern.
Wheel & Tyre, Spare, 16" Alloy (supply only)	WTA16	Alloy wheel, 6-stud, "Landcruiser" pattern.
Wheel & Tyre, Spare, 16" Steel (supply only)	WTS16	White "Sunraysia" wheel, 6-stud, "Landcruiser" pattern.
Spare Wheel Mount.	WM1416	Additional to Spare Wheel if required.
Attachment Storage Pan - Full Length	CKRPP	Aluminium Pan for storing attachments and accessories.
Auger Stands	AM2435	Stands for storing augers.

**NOTE: All Sureweld accessories including Wheels & Tyres are supplied brand new.**

## SPECIFICATIONS

The following features are offered with this range of Plant Trailers:

- Independent Rubber Suspension
- Choice of Mudguard colours.
- Multi volt LED Lights. All Plug types available.
- High-grade structural aluminium.
- Hinged Aluminium Ramps.
- All new Wheels & Tyres. 8 ply light Truck Tyres.

### SW2000C, SW2000 & SW2000W

Nominal dimensions in mm. Match with letters on the diagram below.

- Also included:
- Front axle Disc Brakes.
  - 14"/13"<sup>#</sup> steel Wheels. "Sunraysia" white.
  - Mechanical-override Brakes.
  - 50mm Coupling.
  - Ford stud pattern.

Model	Series	A	B	C	D	E	F	G	H	I	TARE	A.T.M	PAYLOAD
SW2000C <sup>#</sup>	Excavator	1875	730	4000	470	300	1100	1130	1600	300	280 Kg	2000 Kg	1720kg
SW2000	Excavator	2100	750	4100	470	300	1310	1350	1820	405	335 Kg	2000 Kg	1665 Kg
SW2000W	Loader	2100	750	4100	470	375	1600	1640	2110	405	355 Kg	2000 Kg	1645 Kg

### SW2400EC, SW2400E & SW2400EW

Nominal dimensions in mm. Match with letters on the diagram below.

- Also included:
- Electronic Break-away unit.
  - 14" steel Wheels. "Sunraysia" white.
  - 10" Electric Drum Brakes - All Wheels.
  - 50mm Coupling.
  - Ford stud pattern.

Model	Series	A	B	C	D	E	F	G	H	I	TARE	A.T.M	PAYLOAD
SW2400EC	Excavator	1875	730	4000	470	300	1100	1130	1600	300	335 Kg	2400 Kg	2065kg
SW2400E	Excavator	2100	750	4100	470	300	1310	1350	1820	405	375 Kg	2400 Kg	2025 Kg
SW2400EW	Loader	2100	750	4100	470	375	1600	1640	2110	405	395 Kg	2400 Kg	2005 Kg

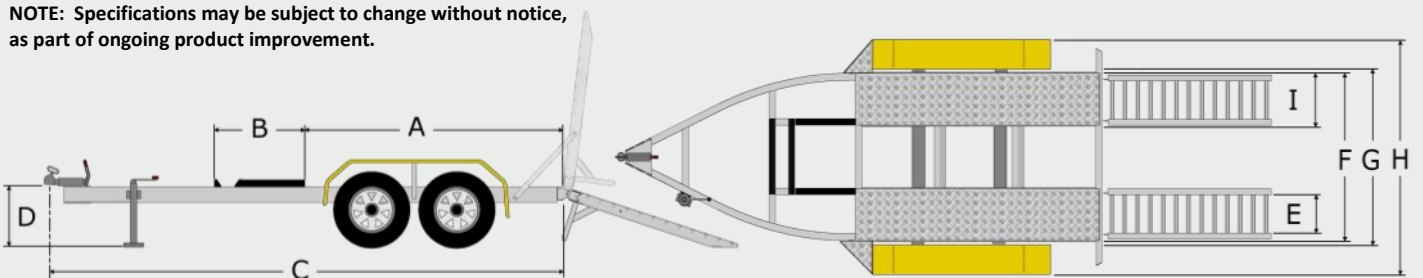
### SW3500E & SW4100E

Nominal dimensions in mm. Match with letters on the diagram below.

- Also included:
- Electronic Break-away unit.
  - 16" steel Wheels. "Sunraysia" white.
  - 12" Electric Drum Brakes - All Wheels.
  - 50mm/70mm\* Coupling.
  - Landcruiser stud pattern.

Model	Series	A	B	C	D	E	F	G	H	I	TARE	A.T.M	PAYLOAD
SW3500E	Multi-use	2600	900	4800	580	400	1800	1980	2490	600	625 Kg	3500 Kg	2875 Kg
SW4100E*	Multi-use	2600	900	4800	580	400	1800	1980	2490	600	650 Kg	4100 Kg	3450 Kg

NOTE: Specifications may be subject to change without notice, as part of ongoing product improvement.



A = Deck Length. B = Bucket Rest Length. C = Trailer Length. D = Tow Hitch Height. E = Ramp Width [internal].  
F = Deck Width. G = Clearance Between Guards. H = Trailer Width [external]. I = Deck Section width.